

## Booking Form

### Parents Details

Name: \_\_\_\_\_

Address: \_\_\_\_\_  
\_\_\_\_\_  
\_\_\_\_\_

Phone No. \_\_\_\_\_

### Child's Details

Name: \_\_\_\_\_

Date of Birth: \_\_\_\_\_

Preferred Session Please tick:

Full Time:

Part Time Morning:

Part Time Afternoon:

Free Preschool:

Please state if your child has additional needs :  
\_\_\_\_\_  
\_\_\_\_\_

Are you engaged or planning any courses or employment:  
\_\_\_\_\_  
\_\_\_\_\_

## Fee Structure

Full Time Fee €198.00

Band A €98.00

Band B €128.00

Band C €153.00

Part Time Fee €99.00

Band A €49.00

Band B €64.00

Band C €76.50

*All Sessional places are free under the ECCE Preschool Scheme*

*Please contact the service to enquire which Band you qualify for*

*All fees are paid weekly in advance*

*There is a €50.00 deposit for each child which is refundable when child ceases attending if all fees are up to date*

**Balbriggan Community Childcare Group Ltd.**  
Facilitating the Community

Tankardville House  
Breacan Close  
Balbriggan

Phone: 01 841 7104  
Fax: 01 968 0490  
E-mail: [info@bccg.ie](mailto:info@bccg.ie)



# Balbriggan Community Childcare Group Ltd.

*Facilitating the Community*



*Delivering Quality Affordable  
Childcare to the Community*

### Contact:

**Tel: 01 841 7104**

**Fax: 01 968 0490**

**Email: [info@bccg.ie](mailto:info@bccg.ie)**

**Web: [www.bccg.ie](http://www.bccg.ie)**



## Balbriggan Community Childcare Group Ltd. is a Company Limited by Guarantee with Charitable Status.

Balbriggan Community Childcare Group Ltd. is the first Affordable Community Based Childcare facility in the Balbriggan Area.

## Our Mission Statement

We provide Quality, Accessible and Affordable Child-care for Balbriggan and its environs.

## Funding

We are Funded under the Government NCIP Programme and operate a Tiered Fee Structure.

This is a system of Bands which allow a subvention or subsidy towards the cost of the childcare place.

Parents who can qualify for this subvention, pay at a lower rate and the remainder of the fee is paid to the crèche by the government on your behalf.

In September 2010 we will operate the Free ECCE Pre-school places for children aged 3 years 4 months and over.

We are Notified to the HSE and Affiliated to the NCNA (*National Children's Nursery Association*)



## Where Are We?

Balbriggan Community Childcare is situated in a beautifully restored thatched cottage "Tankardville House" which dates back to the 17th Century, just off Drogheda Street in Brean Close.

This setting gives a magical air to the facility and this is followed through with the layout of the rooms

## Rooms

We facilitate children in five childcare rooms:

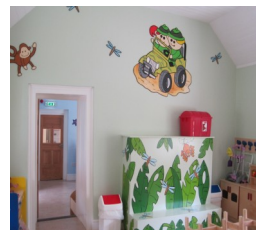
Toddler Full Time: Age 1—3yrs

Toddler Part Time: 1—3yrs

Preschool Full Time 3—5yrs

Preschool Part Time: 3—5yrs

Sessional Preschool: 3yr 4mths—5 yrs



## Outdoor Play Area



The children can explore and enjoy our specially designed outdoor play area. This has been designed with children's development needs in mind with areas for the children to partake in group and solo play.

## Staff

All our Staff are Fully Trained, Committed, Dedicated and Professional to ensure that a quality service is delivered with an individual plan developed to meet the needs of each child.

## We provide Full Time and Part Time care for Children

Our Opening Hours are:

Full Time: 8.00am — 5.30pm

Part Time:

Morning 8.00am — 12.00pm

Afternoon 1.00pm — 5.00pm

Sessional

Morning 9.00am—12.00pm

Afternoon 1.00pm—4.00pm

## Waiting List

Due to the demand for Flexible Affordable Childcare we are currently developing our waiting list for September

2010

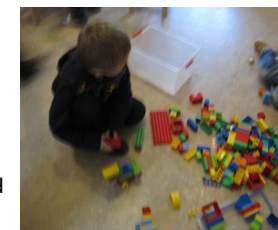
If you are interested in booking a place for your child, you can fill in the booking form printed on the back of the brochure, or by Phone or Email to the service.

Currently we have a huge demand for the Free Preschool places in September 2010, if your child qualifies for this scheme please contact us immediately to book your place

*This form is printed on the back of the brochure*

## Food

Our dedicated cook provides hot meals and snacks for the children. All our food is prepared on site from fresh ingredients using the HSE menu plan. This is a three week varied menu plan which incorporates good nutrition for the children.



## Curriculum

We have developed our curriculum using Síolta and the new framework Aistear. We utilise an emergent play curriculum which looks at the individual needs of the children in our service.

## Policies & Procedures

We have a full range of Policies & Procedures which can be viewed by prospective parents

**Balbriggan Community Childcare Group Ltd.**  
**Facilitating the Community**

Tankardville house  
Brean Close  
Balbriggan  
Co. Dublin  
Phone: 01 841 7104